

Sub A

(30)

Tryptase  $\alpha$     MSLLLLLALP VLASRAYAAP APVQALQQAG IVGGQEAPRS KWPWQVSLRV RDRYWMHFCG  
 Tryptase  $\beta$ -I    --N----- --G---RV-  
 Tryptase  $\beta$ -II  --N----- --G---RV- -

A

(90)

Tryptase  $\alpha$     GSLIHPQWVL TAAHCLGPDV KDLATLRVQL REQHLYQDQ LLPVSRIIVH PQFYFIQTGA  
 Tryptase  $\beta$ -I    -----V-----A-----  
 Tryptase  $\beta$ -II  -----V-----A----- -

B

(150)

Tryptase  $\alpha$     DIALLELEEP VNISSRVHTV MLPPASETFP PGMPCWVTGW GDVDNDEPLP PPFPLKQVKV  
 Tryptase  $\beta$ -I    -----V-H----- T-----  
 Tryptase  $\beta$ -II  -----KV-H----- T----- -

D

(210)

Tryptase  $\alpha$     PIMENHICDA KYHLGAYTGD DVRIIRDML CAGNSQRDSC KGDSGGPLVC KVNGTWLQAG  
 Tryptase  $\beta$ -I    -----V-----  
 Tryptase  $\beta$ -II  -----V----- -

1

Tryptase  $\alpha$     VVSWDEGCAQ PNRPGIYTRV TYYLDWIHHY VPKKP  
 Tryptase  $\beta$ -I    -----G-----  
 Tryptase  $\beta$ -II  -----G----- -

2

3

FIG. 1



037230 2363560

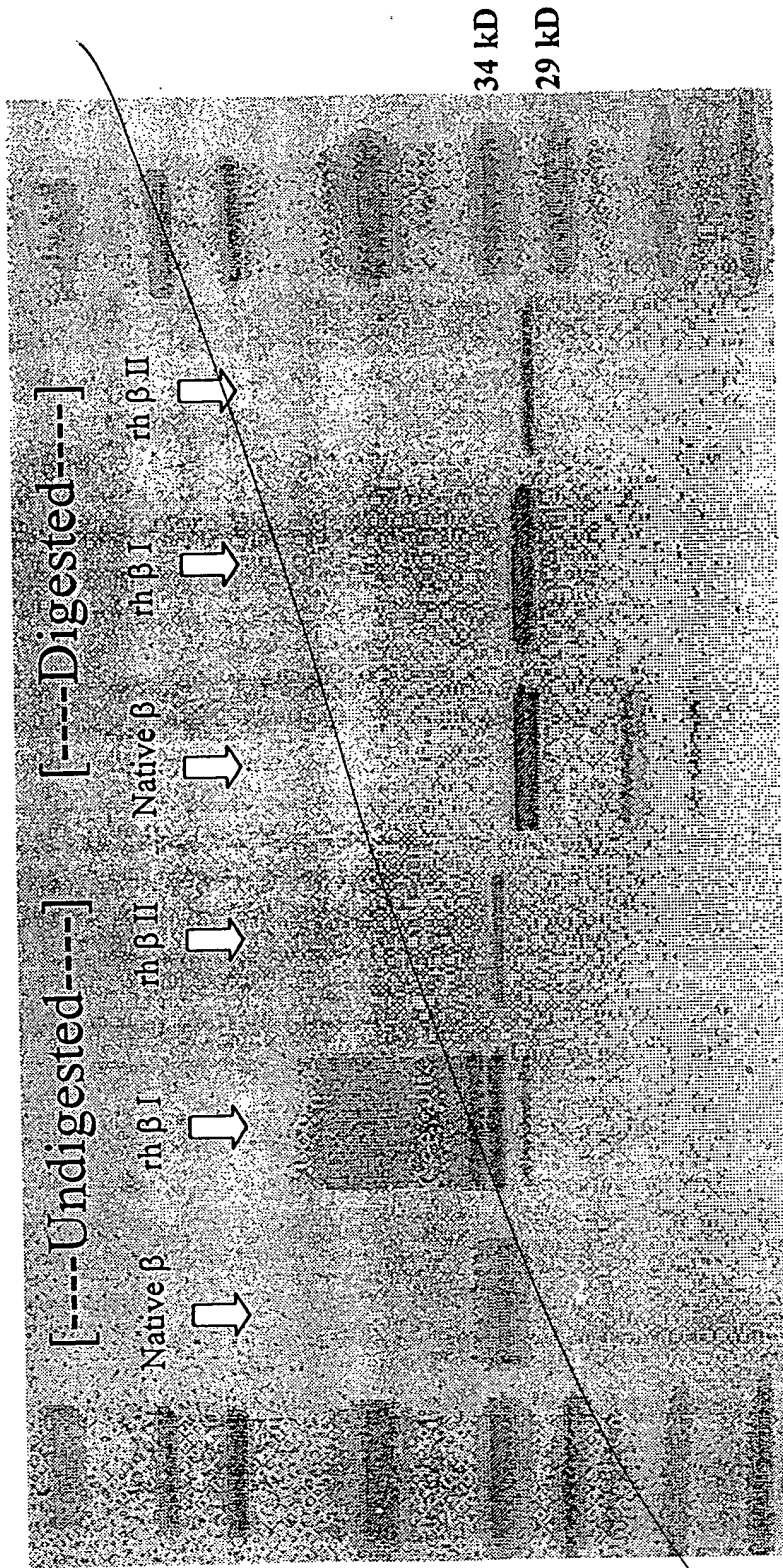


FIG. 3

007250 236559

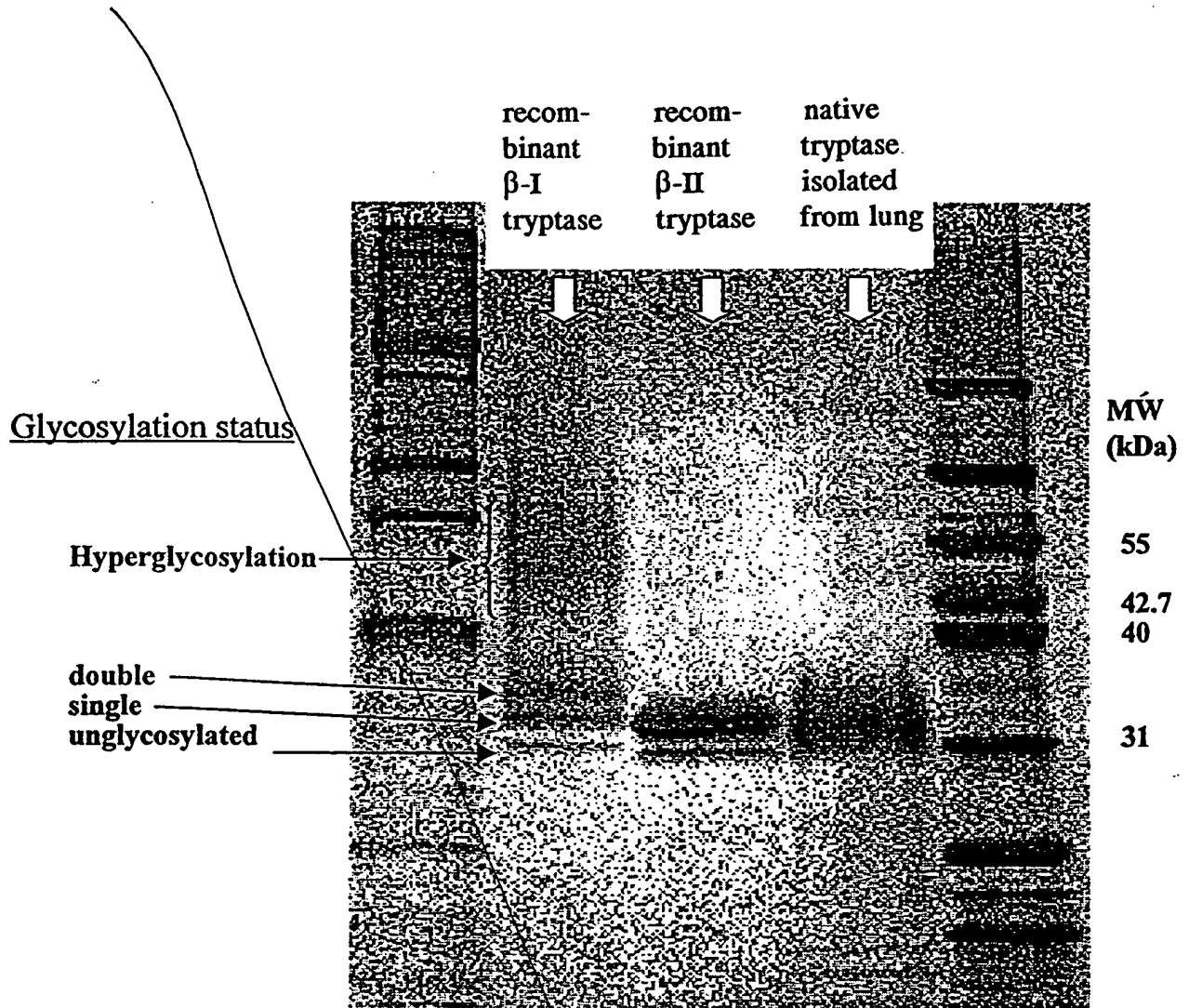
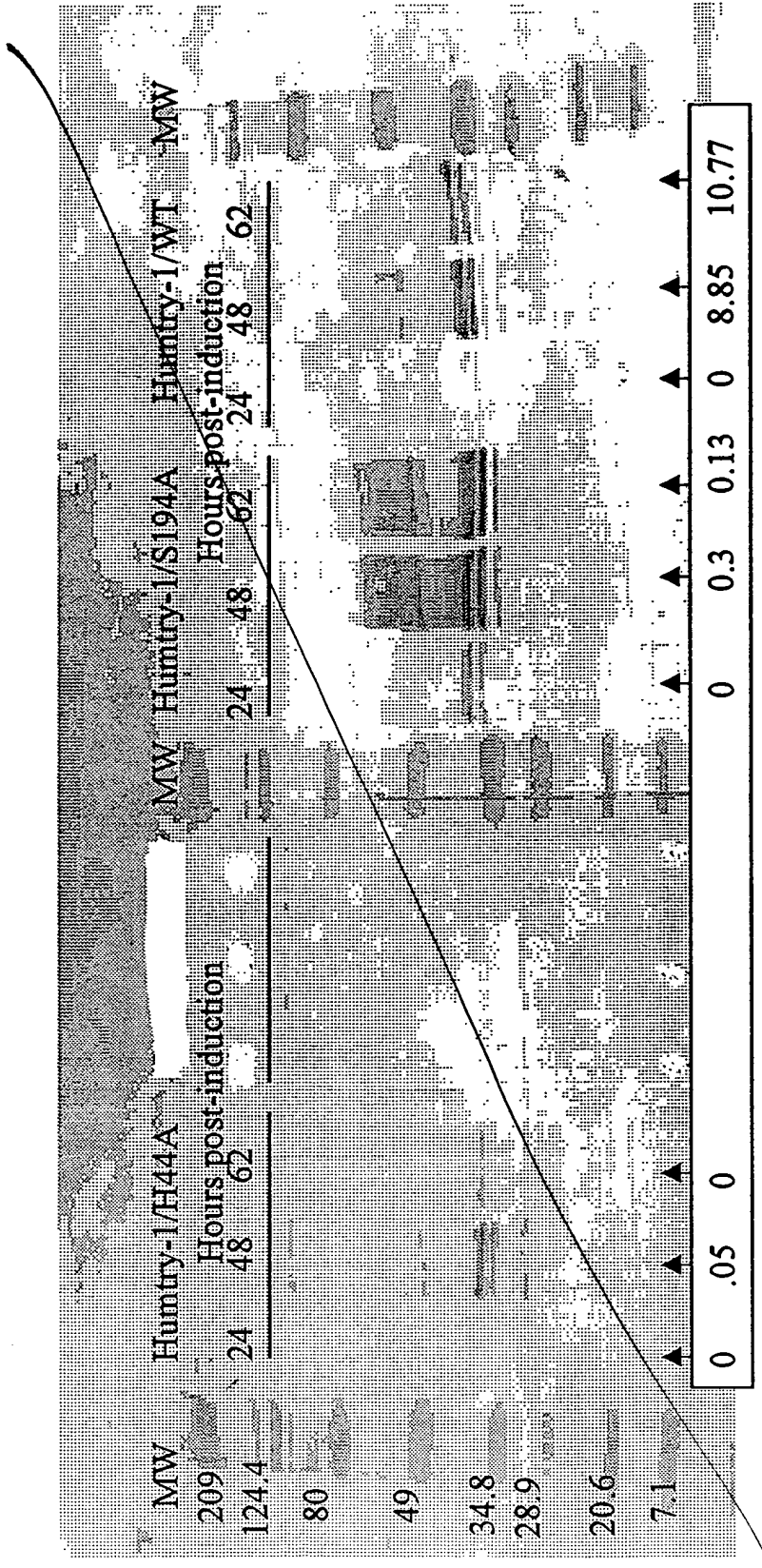


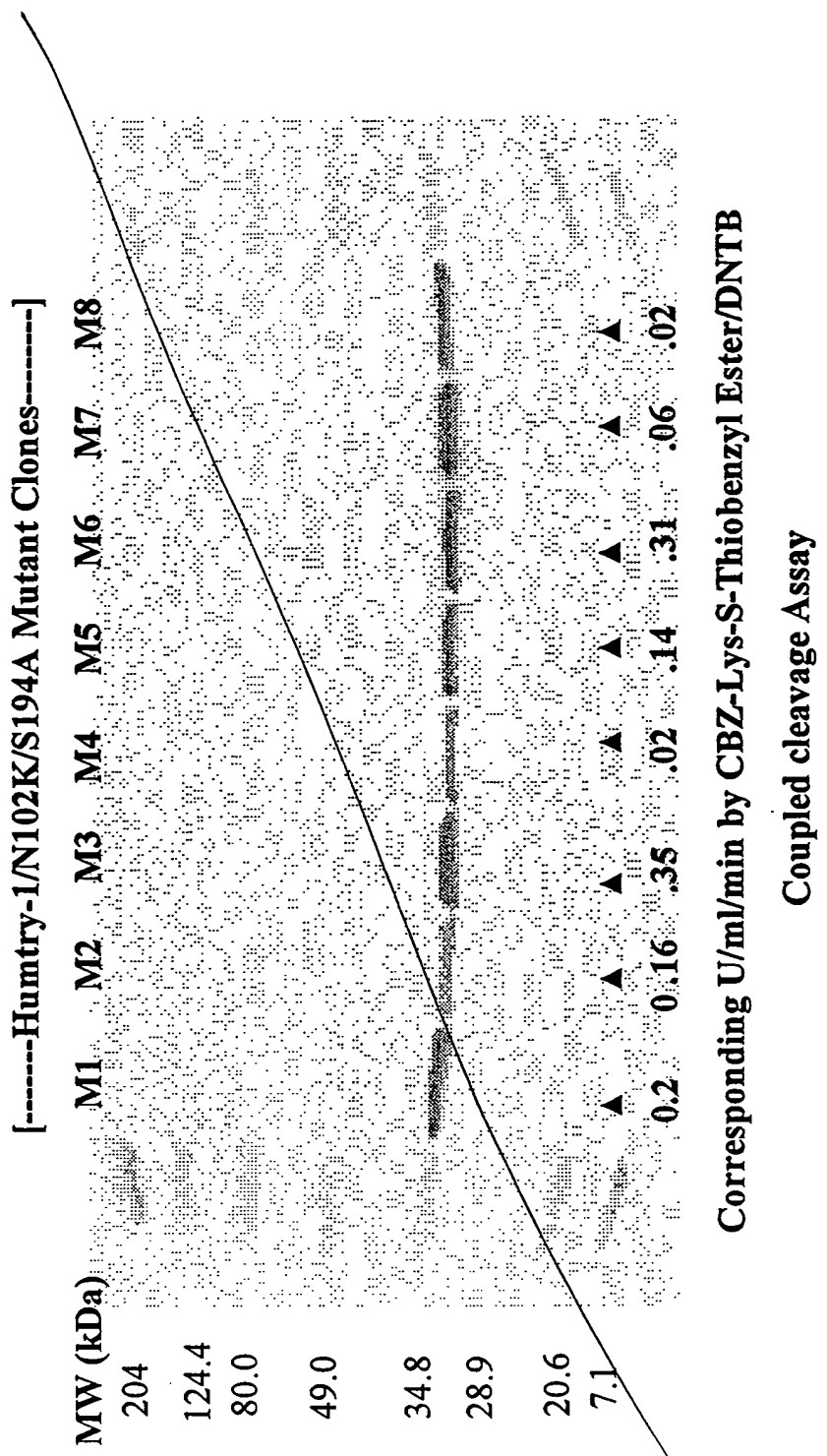
FIG. 4

007290 28686560



Corresponding Units/ml/min by CBZ-Lys-S-Thiobenzyl Ester/DNTB Coupled Cleavage Assay

FIG. 5



**FIG. 6**

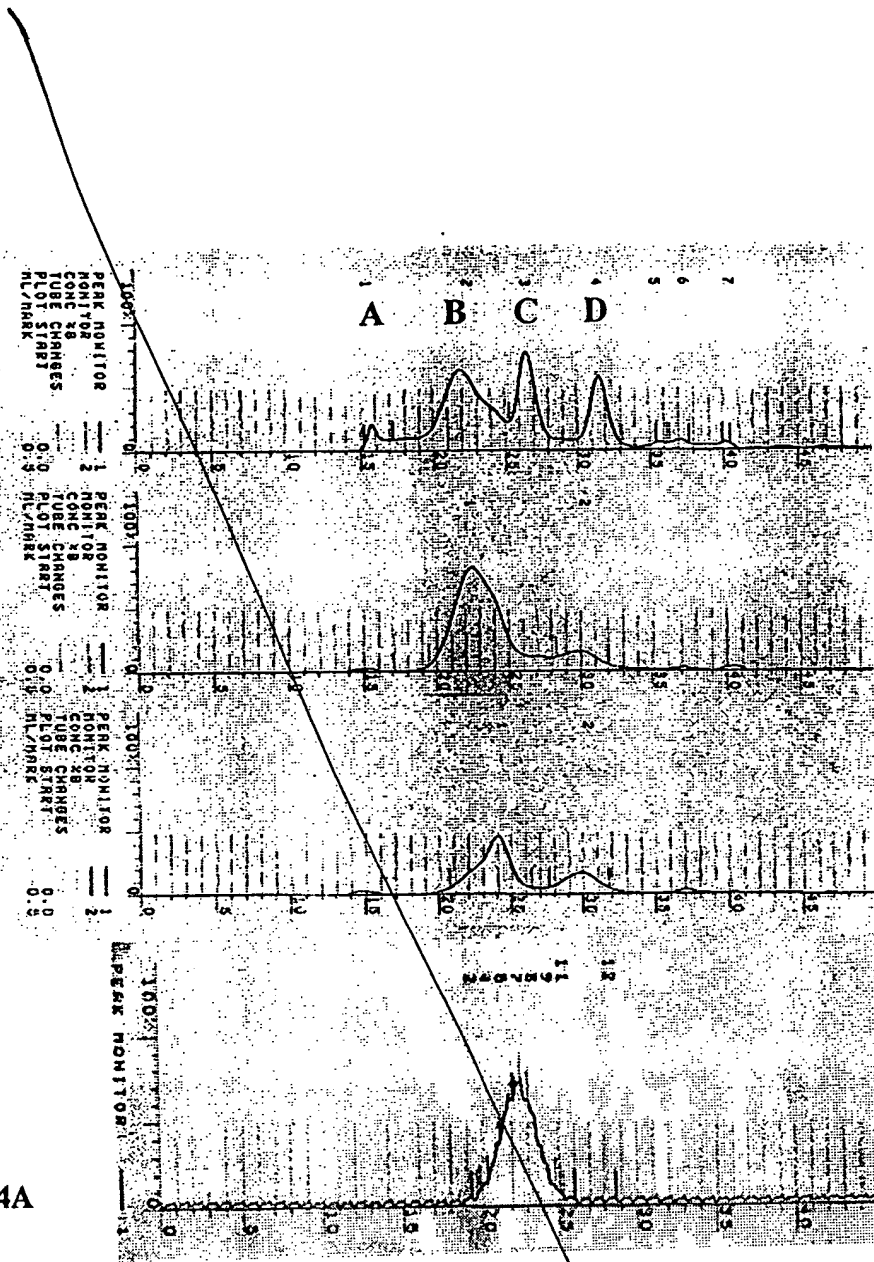
0959992 062400

MW STD

rh  $\beta$  I  
trypsinase

rh  $\beta$  II  
trypsinase

rh  $\beta$ -I  
trypsinase  
Mutant S194A

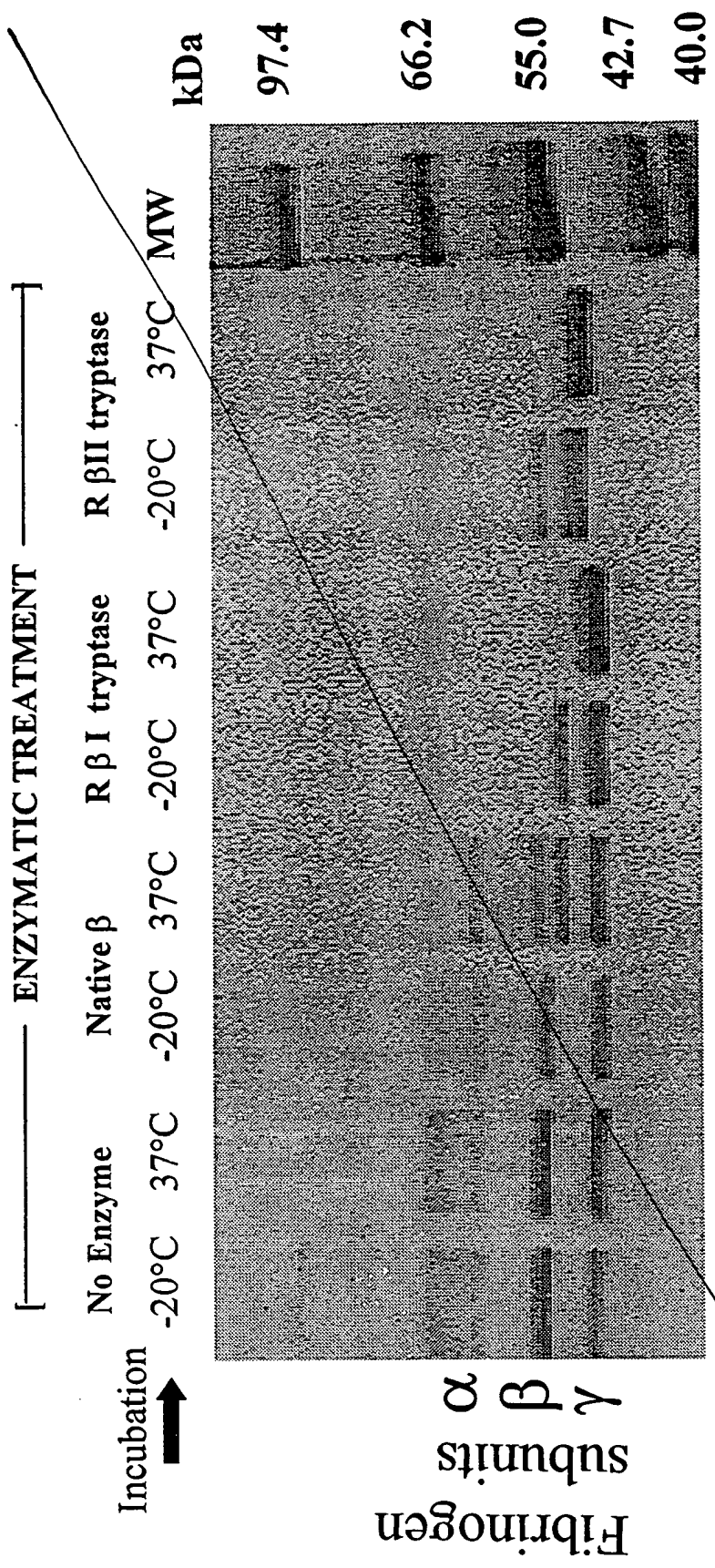


A. Ferritin  
B. Aldolase  
C. Albumin  
D. Chymo-  
trypsinogen

FIG. 7







**FIG. 9**